

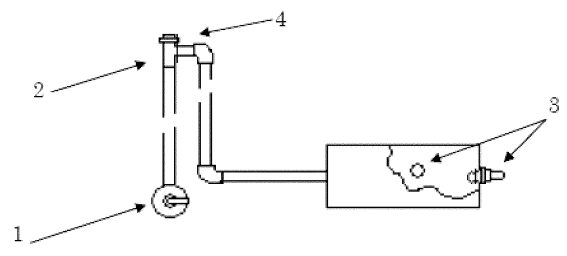


SAN-T-FLUSH™

For Black/Gray Holding Tanks

OPERATING INSTRUCTIONS FOR FLUSHING TANKS

1. Dump your holding tank in the usual manner (per manufacturer's instructions) at an approved station.
2. Leave dump valves open to flush tank.
3. Attach garden hose to San-T-Flush inlet. We recommended sanitizing your system using our special San-T-Bottle (see below).
4. Begin flushing, allow water to run approximately 1-3 minutes.
5. Disconnect garden hose and close dump valve.

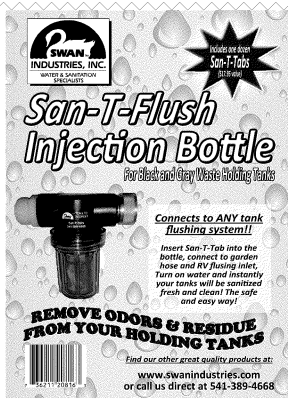


Standard kits* include:

# on Diagram	SFS 150 (1 jet) / SFS 250 (2 jet)
1	Fill Inlet
2	Brass Vacuum Breaker
3	Spraying Jet(s)
4	Plastic Check Valve

# on Diagram	SFS 350 (1 jet) / SFS 450 (2 jet)
1	Fill Inlet
2	Plastic Vacuum Breaker w/ check valve
3	Spraying Jet(s)

*Optional kits available



To complete your system, **Swan Industries, Inc.** has specially formulated **San-T-Tabs** (sanitizing tablets) that are easily injected into your flushing systems using our **San-T-Bottle** (San-T-Tab injection bottle). This will allow you to clean, sanitize and freshen up the tanks.

Call today to order yours!

To order San-T-Tabs and/or San-T-Bottle (injection bottle):

Make check payable to
Swan Industries and mail to:

Have Visa or Master Card
ready and call:

Swan Industries
633 NE First Street
Bend, OR 97701

or

541-389-4668

See more quality Swan products listed on our website

WINTERIZING INSTRUCTIONS FOR FLUSHING SYSTEM

(Following this procedure will protect the low points in the plumbing (if any exist) from freezing up)

1. Connect a hose to the San-T-Flush Inlet.
2. The hose must be attached to a water pump (pressure) port.
3. A second hose must be submersed in a container of **RV NON-TOXIC PROPYLENE GLYCOL ANTI-FREEZE**.
4. Turn on water pump until you see the fluid run out tank, or hear the fluid enter the tank via the Jet Heads.

For further information or questions contact us at:

OEM INSTALLATION INSTRUCTIONS

JET HEADS

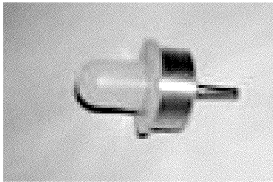
The single tank flushing systems come with one or two jets depending on the model. Standard kits include the spin weld version. A large flange screw and glue version is also available by special request.

SFS-150/350 (ONE JET HEAD)

Drill 7/8" hole not more than 2" from the top of tank, and as close to the center of the tank as possible.

SFS-250 /450(TWO JET HEADS)

Drill second 7/8" hole at opposite end of tank from the drain not more than 2" from the top of the tank.



CAUTION: USE ONLY SPECIAL TOOL DESIGNED FOR INSTALLATION OF JET HEADS. Contact Swan Industries for information on purchasing special tool.

ALWAYS USE SAFETY GLASSES

1. Place jet head in tool carefully, making sure jet head is well seated.
2. Place jet head against hole, using slight pressure.
3. Use high-speed drill or router to turn jet head until spin patch melts on edges. Stop spin at correct time. Allow poly on both surfaces to solidify. Be sure to spin in over 6,000 rpm.
4. Check for uniformity of weld to prevent leaks.
5. Install vacuum breaker w/ check valve a minimum of 6" above the flood rim of the highest fixture connected to the waste holding tank (see diagram on reverse side). DO NOT CONNECT ANY OTHER CHECK VALVE TO THIS SYSTEM.
6. Test flushing system for leaks with a minimum of 40 PSI.

NOTE*** If it's necessary to add any part to this system, the parts must be at least the equivalent of IAMPO TSC 28-88 Flushing systems must be purchased from a certified and approved supplier. Swan Industries is certified and approved.

WARRANTY

1. One Year Limited Warranty.
2. Labor, shipping and handling cost are excluded.
3. Warranty covers only the original purchaser. Warranty is not transferable to subsequent owners.
4. Warranty becomes null and void if products have been repaired by an unauthorized person, modified, improperly operated, or in any way abused.
5. Swan Industries, Inc. assumes no expressed or implied responsibility other than set forth above and will not accept responsibility for any other warranties issued and or implied.

For further information or questions contact us at:

633 NE First Street, Bend, OR 97701 ❖ Phone: 541-389-4668 ❖ Fax: 541-389-4068 ❖ www.swanindustries.com